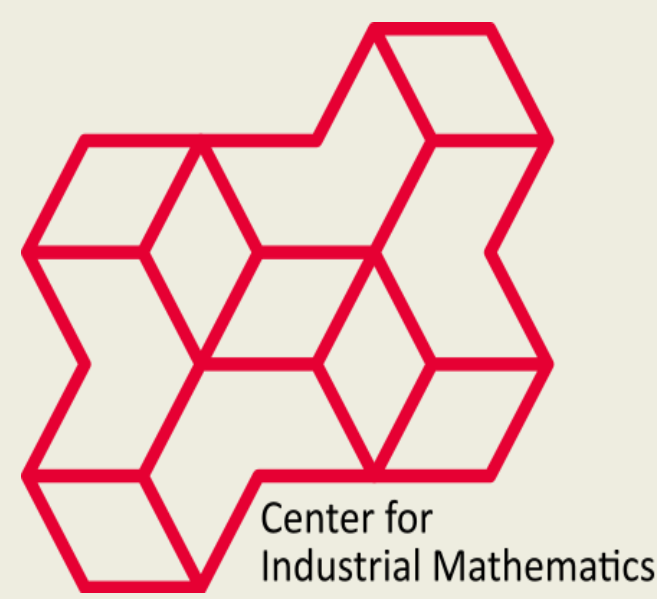
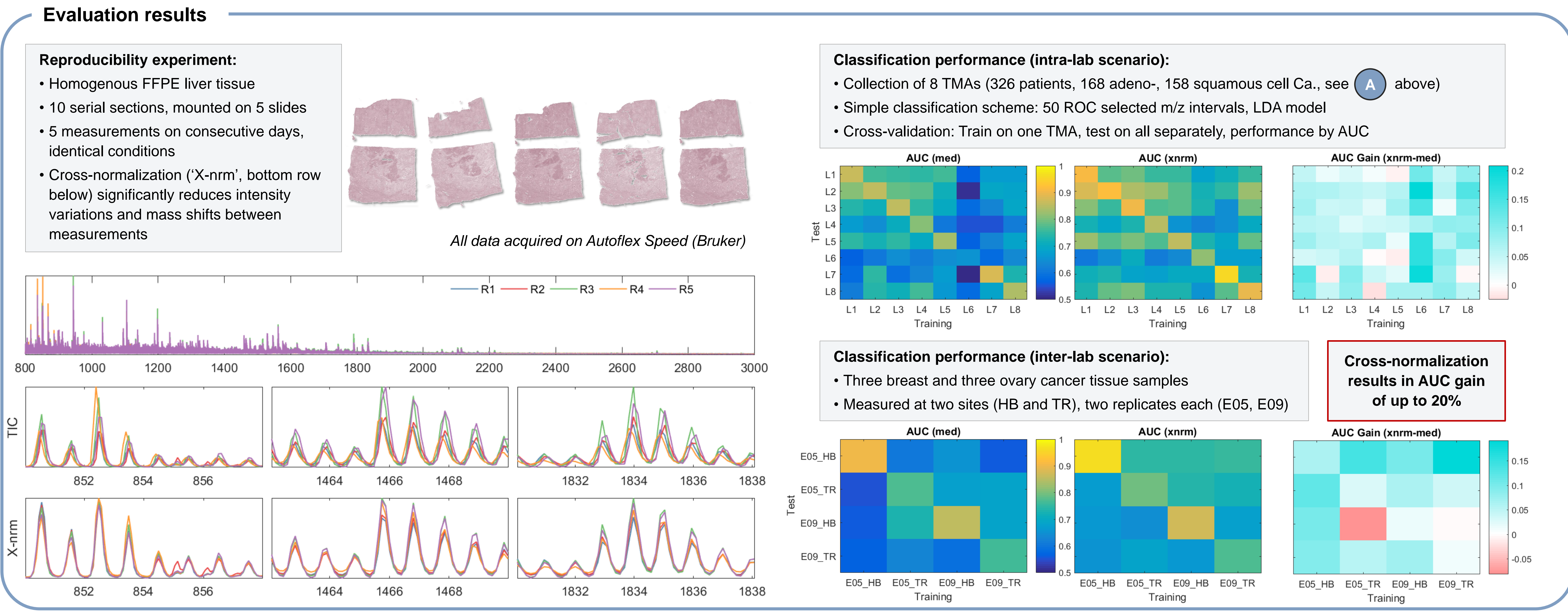
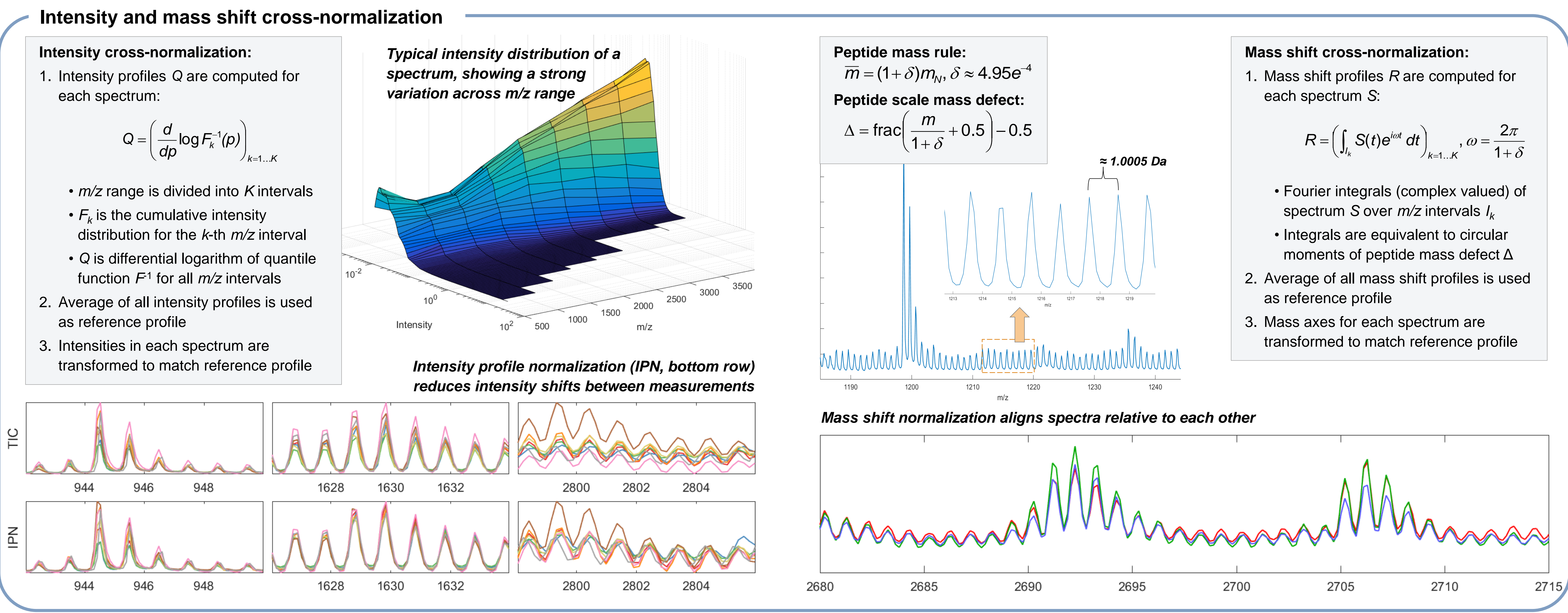
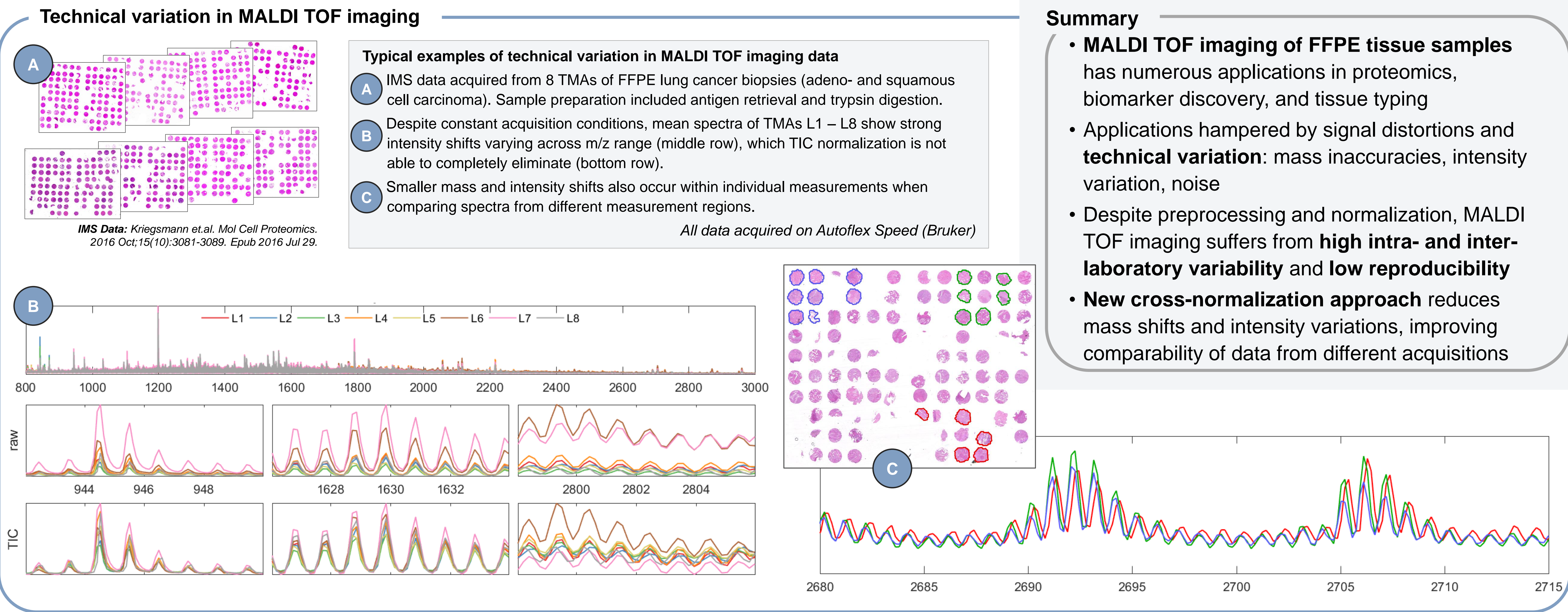


# A novel cross-normalization method for MALDI TOF imaging data of FFPE tissue for enhanced comparability and biomarker discovery



Tobias Boskamp<sup>1,2</sup>, Delf Lachmund<sup>1</sup>, Lena Hauberg-Lotte<sup>1</sup>, Janina Oetjen<sup>1,3</sup>, Yovany Hernandez-Cordero<sup>1</sup>, Jens Behrmann<sup>1</sup>, Jan Hendrik Kobarg<sup>2</sup>, Rita Casadonte<sup>4</sup>, Jörg Kriegsmann<sup>4,5</sup>, Peter Maass<sup>1,2,3</sup>  
<sup>1</sup> Center for Industrial Mathematics, University of Bremen, Bremen, Germany; <sup>2</sup> SCiLS GmbH, Bremen, Germany; <sup>3</sup> MALDI Imaging Lab, University of Bremen, Bremen, Germany;  
<sup>4</sup> Proteopath GmbH, Trier, Germany; <sup>5</sup> Center for Histology, Cytology and Molecular Diagnostic, Trier, Germany



This work has been partly funded by the German Federal Ministry of Education and Research under the "KMU Innovativ" programme, contract number 13GW0081